



Practical Applications of INSIGHT in Utilities

in conjunction with AMWA's Management Committee

July 9, 2024

www.amwa.net



WELCOME REMARKS



ANTOINETTE BARBER

**Director of Communications and Utility
Management Programs,
AMWA**

www.amwa.net



REMINDERS

- 1** All attendees will be muted. If you have any questions or comments, please put them in the chat.
- 2** The slides and recording will be available on the AMWA website after the presentation, along with recordings of previous webinars.

INTRODUCING SPEAKERS



BRETT ANDERSON

Business Operations Manager,
City of Minneapolis



ROCKY CRALEY

Vice President,
Raftelis

AMWA's Management Committee and Raftelis: Practical Applications of INSIGHT in Utilities:

City of Minneapolis
Division of Water Treatment and
Distribution Services



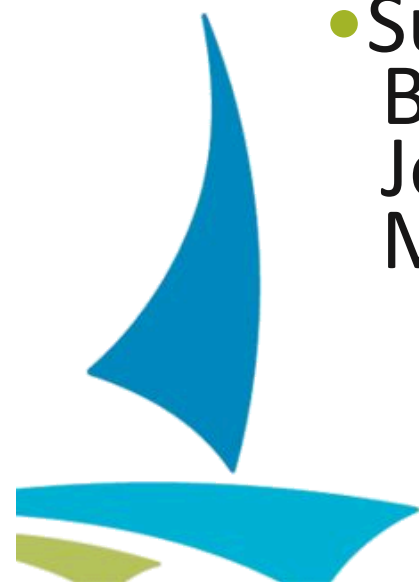
Overview

- Utility Overview
- AMWA Use Cases
 - Meter fixed charge
 - Monthly charge for residential customer
 - Other uses
- Conclusion

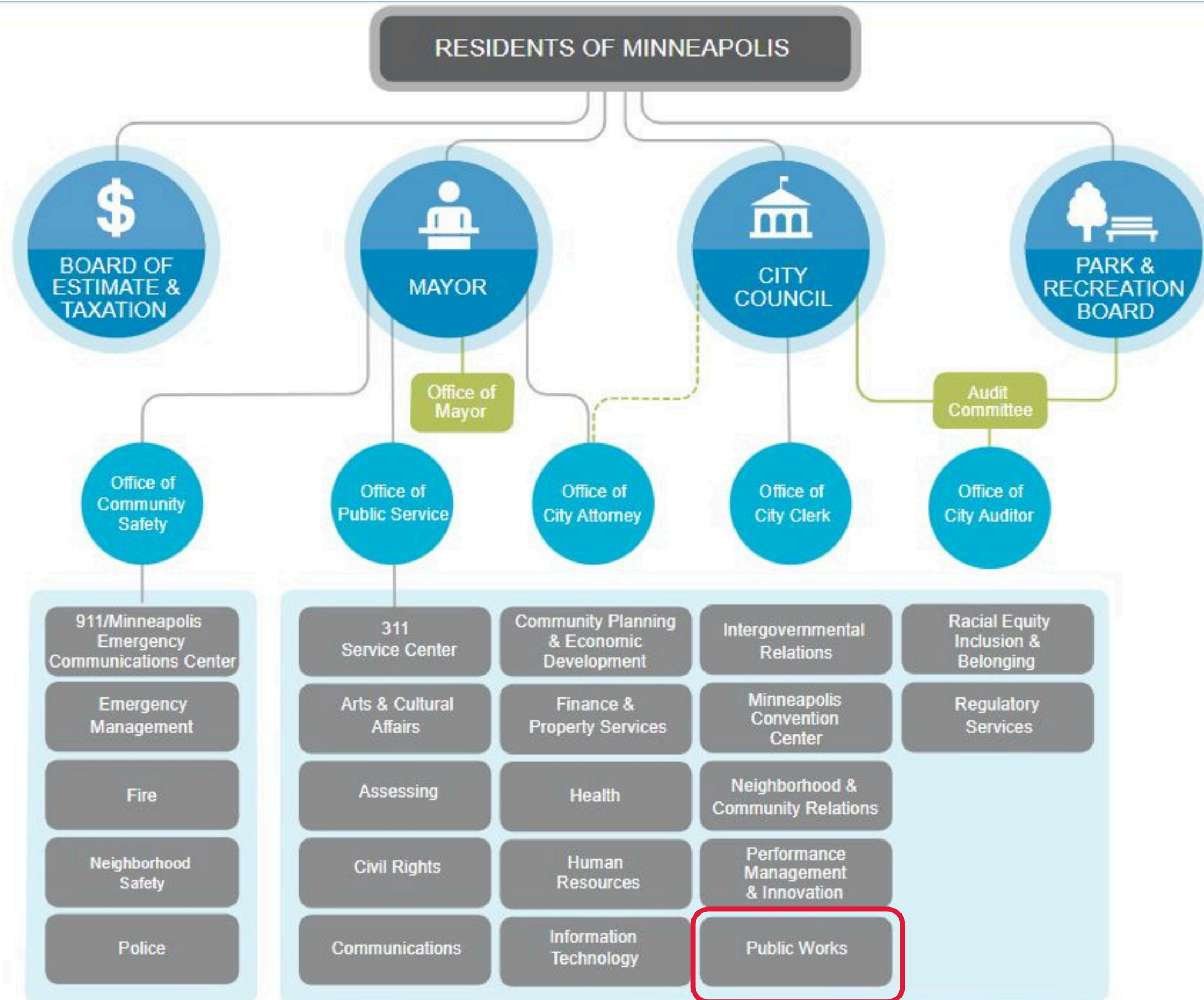


Minneapolis Water Treatment and Distribution Services (WTDS)

- Largest treatment plant in the Midwest
- Estimated infrastructure value of over \$3 Billion
- Two water treatment campuses
- Over 1,000 miles of water main
- Over 15,000 isolation valves
- Over 8,000 fire hydrants
- Withdrawal of 20 billion gallons of water from the Mississippi each year
- 100,000 metered accounts
- Supply water to 6 Wholesale customers – Bloomington, Edina, Columbia Heights, Joint Water Commission, Hilltop, and Metropolitan Airports Commission



Minneapolis government structure



City Budget Process

- Divisions develop their budgets
- Presentation to Public Works Department
- Presentations to Mayor, Council, etc.
- Council adopts budget in December



5/8-inch Meter Fixed Charges per Month

- WTDS was at \$6.50 in 2022 and \$7.50 in 2023.

Data Set	Count	Min	25%	Median	75%	Max	Average
Midwest	7	\$6.00	\$6.00	\$6.50	\$14.40	\$15.30	\$8.74
Annual Billable Flow 10-25 Billion Gallons	19	\$4.41	\$6.00	\$7.85	\$13.00	\$25.83	\$9.96
Population 250-500K	17	\$4.41	\$8.27	\$12.95	\$14.85	\$27.00	\$12.30
Source Water - Surface	45	\$4.52	\$7.38	\$12.95	\$17.35	\$30.14	\$12.74
All Utilities	68	\$4.22	\$7.38	\$12.60	\$16.60	\$30.14	\$12.76



Monthly Charge for Residential Customers

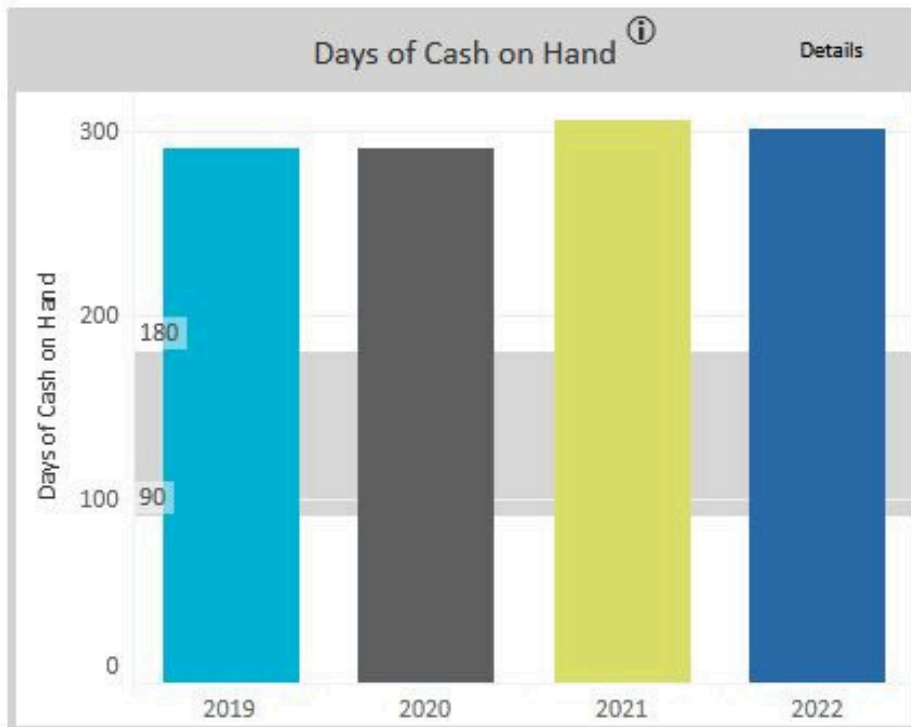
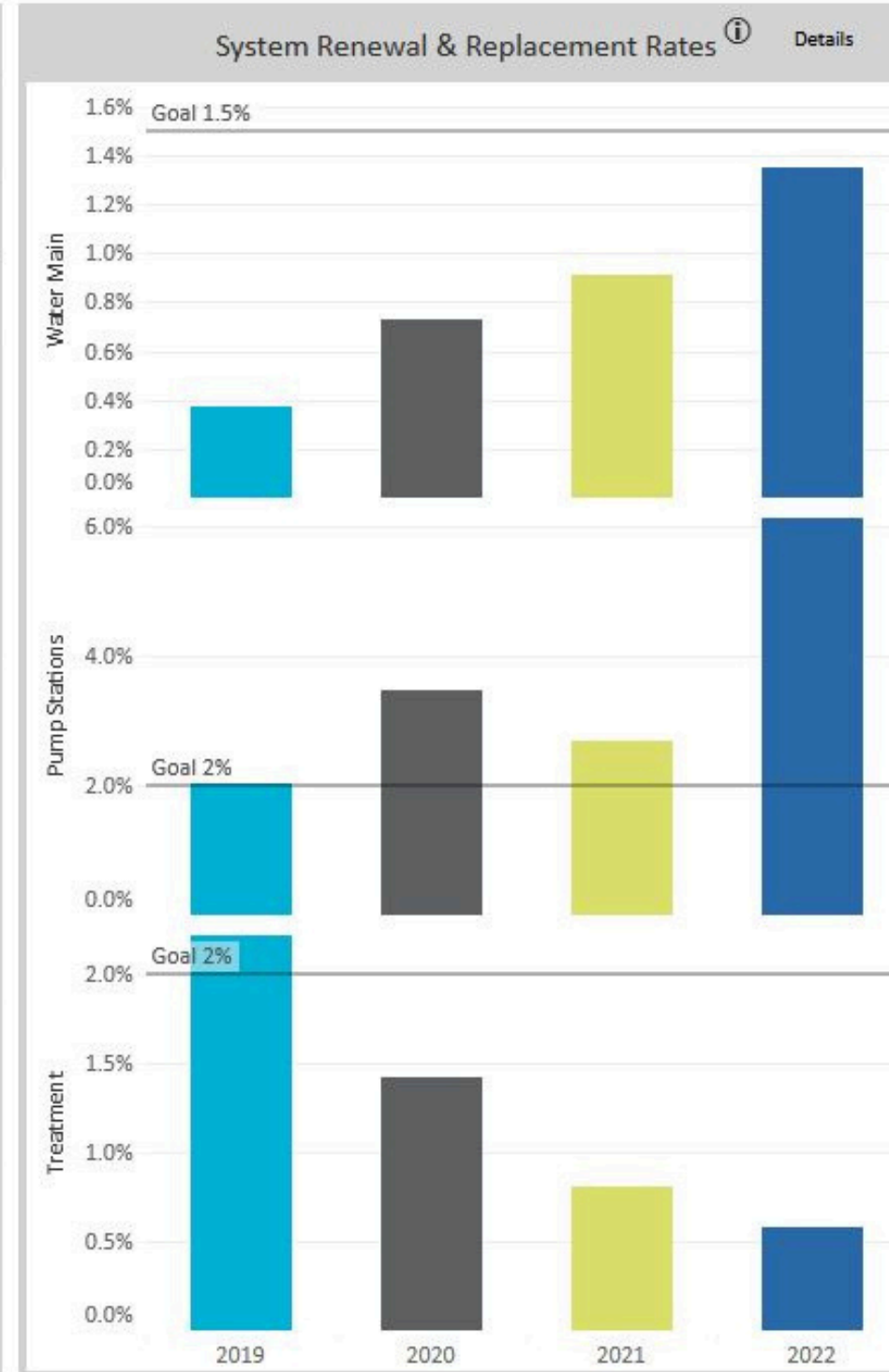
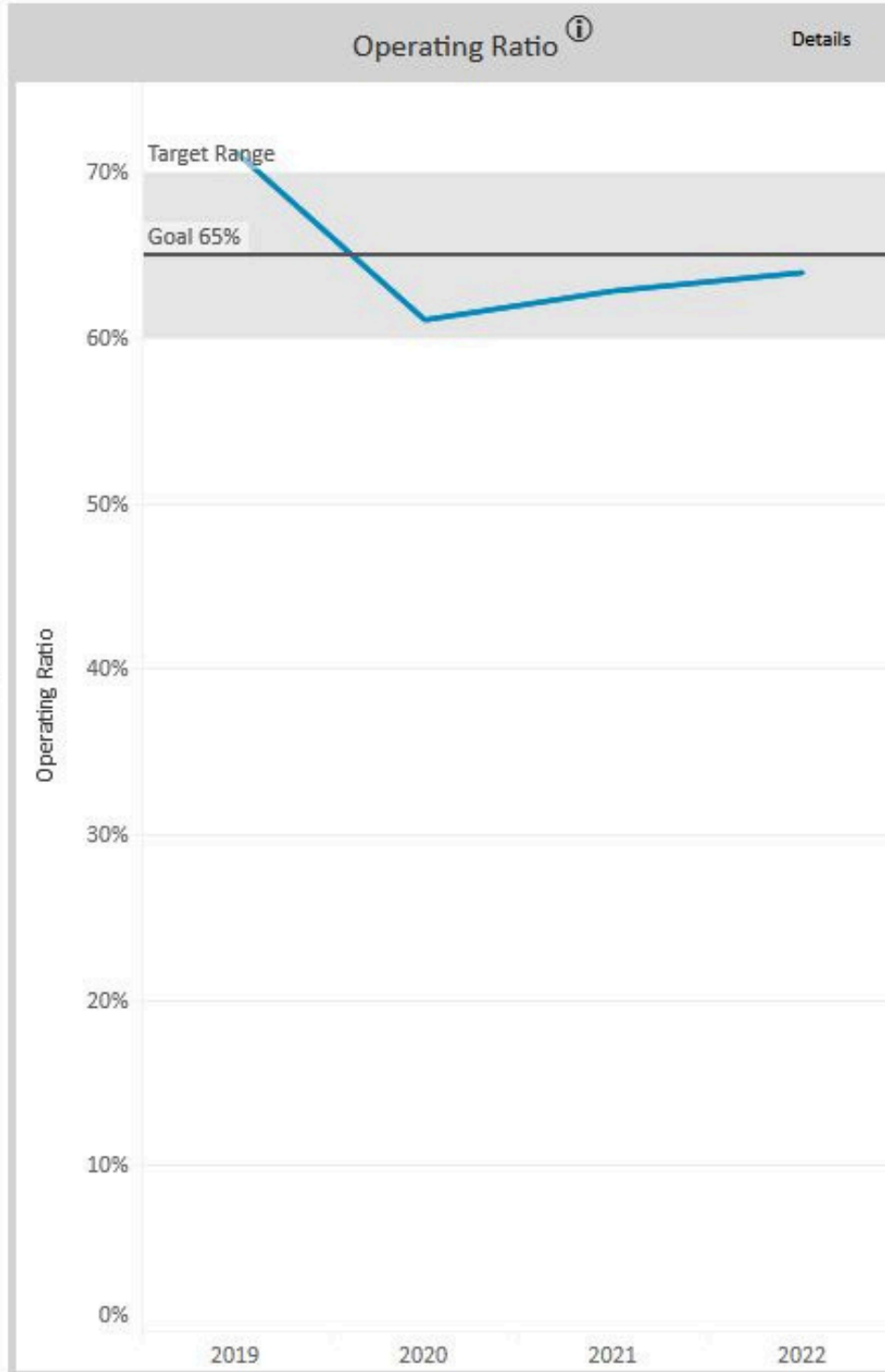
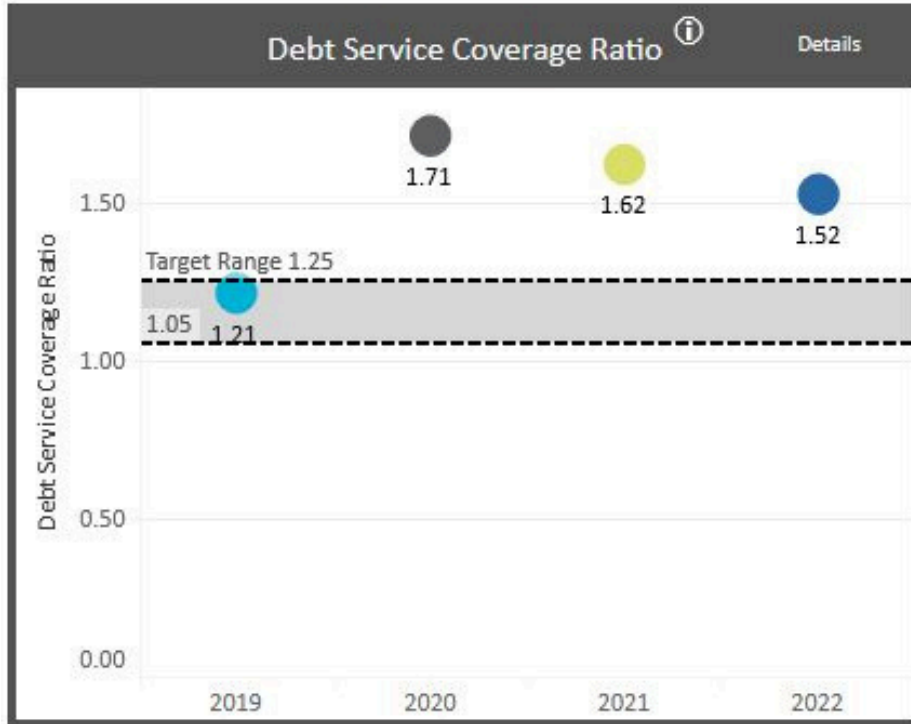
- 5 units of water per month plus 5/8” meter fixed charge
- WTDS was at \$24.90 in 2022 and \$26.10 in 2023.

Data Set	Count	Min	25%	Median	75%	Max	Average
Midwest	7	\$9.74	\$16.17	\$24.90	\$28.83	\$30.66	\$23.01
Annual Billable Flow 10-25 Billion Gallons	21	\$10.03	\$19.86	\$25.00	\$32.08	\$58.53	\$26.94
Population 250-500K	17	\$12.95	\$19.59	\$24.71	\$32.08	\$71.55	\$27.87
Source Water - Surface	46	\$7.74	\$19.39	\$27.39	\$33.50	\$71.55	\$29.11
All Utilities	70	\$7.74	\$20.56	\$26.30	\$33.50	\$86.19	\$29.64



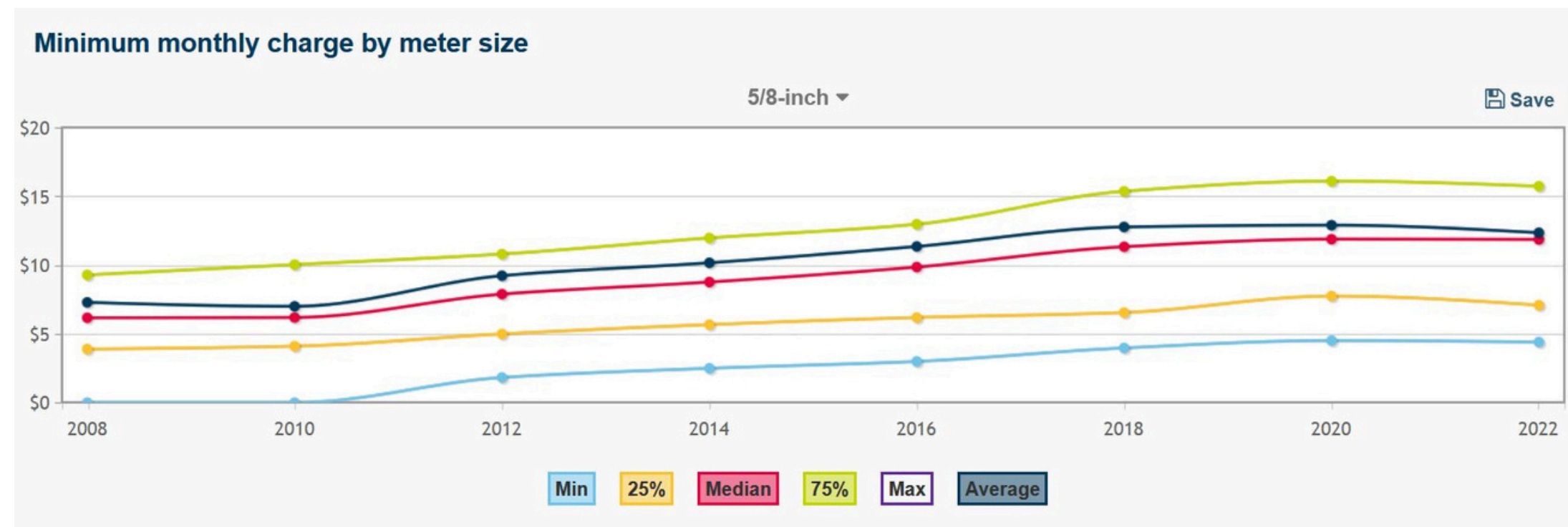
Financial Responsibility

Finances are managed to meet the needs of current and future customers.



Other Uses

- Research
 - Debt service coverage ratio
- Normalizers
- Trend analysis



Conclusions...



DATA IS VERSATILE AND USING THE DATA
EASY TO USE



SAVES TIME



PROVIDES GUIDANCE
CONTEXT AND
UNDERSTANDING



Questions?



BRETT ANDERSON

Business Operations Manager, City of Minneapolis – PW Water Treatment and Distribution Services

c 612 369 8313

e brett.anderson@minneapolismn.gov





INSIGHT UPDATE

QUESTIONS 

THANK YOU! CONTACT US AT:



BRETT ANDERSON

brett.anderson@minneapolismn.gov



ROCKY CRALEY

rcraley@raftelis.com



ANTOINETTE BARBER

barber@amwa.net

REGISTER NOW!



www.amwa.net